

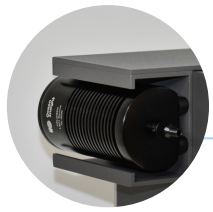
FIALYZER-1000

The World's
SMALLEST
FLOW
INJECTION
ANALYZER

- TYPICAL SETUP**
1. Analyzer
 2. Computer
 3. Autosampler
 4. Service Contract

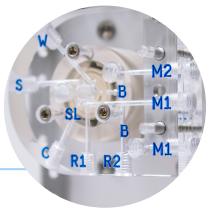
The **FIAlyzer-1000** is a modular analyzer that offers full automation of flow injection analysis. The complete system includes the pump, valve, light source, spectrometer, and other components needed for measuring liquid samples by flow injection analysis.

INSTRUMENT HIGHLIGHTS

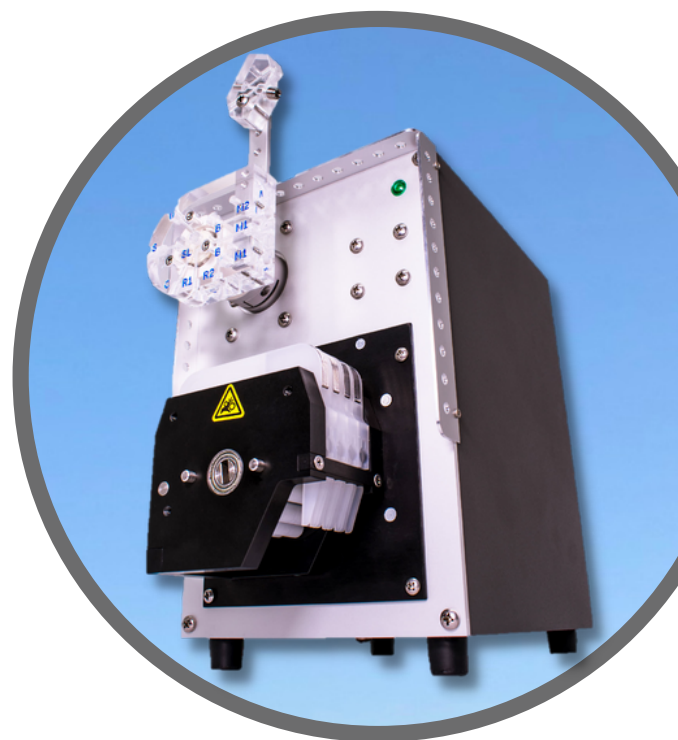


LIGHT SOURCE

LAB-ON-VALVE



PUMP



The system is controlled by our state-of-the-art software, **FIAsoft**, which is also compatible with all standard autosamplers. The robust design, affordable cost, and adaptability make the FIAlyzer-1000 the best choice for agricultural and environmental laboratories performing routine assays.

MODULAR CHANNEL DESIGN



Channels are standalone and can be combined and split apart to meet your analysis needs.

SMALL FOOTPRINT



At just 6 inches wide, the FIAlyzer-1000 was built for optimizing bench space in laboratories.

ULTRAMODERN SOFTWARE



Our control software, **FIAsoft**, is seamlessly integrated with our analytical equipment.

RAPID THROUGHPUT



Our systems can handle up to 240 samples/hour without sacrificing accuracy.

COMMON ASSAYS	MATRICES
AMMONIA (NH ₃ /TKN)	
CHLORIDE	
CYANIDE (TOTAL, FREE/AVAILABLE/WAD)	
NITRATE+NITRITE (NO ₃ , NO ₂ , TN)	
PHOSPHATE (ORTHO, TP, TKP)	
SULFATE	

For **agricultural** laboratories, the FIAlyzer-1000 analyzes soil, plant tissue, manure samples, and other substances related to the growing of crops. For **environmental** laboratories, the FIAlyzer-1000 analyzes a wide variety of nutrients and toxic substances in **runoff, drinking water, and wastewater.**

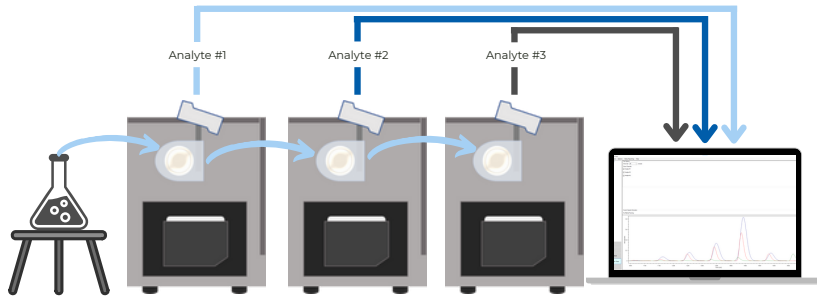
The FIAlyzer-1000 primarily uses **colorimetric detection** for common assays. It is also adaptable and can utilize **fluorometric, amperometric, potentiometric, and flame photometry** forms of detection for certain assays.

See our complete **FIAlyzer-1000 Methods List** on our website [here](#)

EPA and Standard Methods compliance options available



MULTI-CHANNEL ANALYSIS



The **FIAlzyer-1000 series** is **modular**, by design, whereby the instruments can be combined into a 1-4 channel system with a combination of methods.

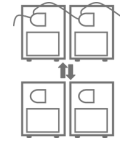
Multi-channel analysis combines various assays into an **efficient, in-line configuration**. Such a setup allows you to test multiple analytes on one sample **simultaneously**, which saves bench space, instrument cost, and time.

REDUCED PREP TIME



Less time and materials needed for filtration and preparation of samples, and decreased sample load production.

BUILT-IN REDUNDANCY



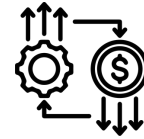
Each channel can be used together or stand alone as workstations, and can be repurposed for redundancy.

CONSECUTIVE SAMPLE PATH



With modular channels, a single sample can be used to analyze several different assays at the same time.

INCREASED EFFICIENCY

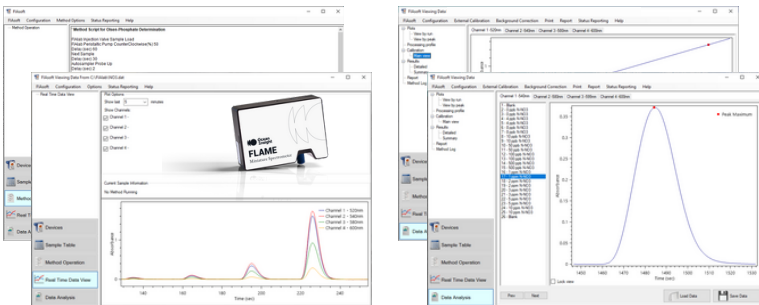


Instead of running multiple runs on the same sample, save time with concurrent analysis.

FIASOFT

OUR IN-HOUSE SOFTWARE MADE BY CHEMISTS FOR CHEMISTS

ANALYSIS
ON-THE-FLY
INTUITIVE
QUALITY CONTROL
FULL
SPECTRAL RANGE
COMPATIBLE
DATA MANAGEMENT



COMPATIBLE WITH WINDOWS 10 AND 11.

ACCESSORIES



PMT-FL for FLUOROMETRIC DETECTION

FIAlab's **EPA-approved** method for **Ammonia** and **TKN** analysis via OPA indicator. (EPA FIAlab100)

CADMIUM COLUMNS

In-house manufactured cadmium columns for nitrate reduction; Lachat Adaption Kit available.



BUY 1 GET 1 25% OFF



AD-100 AUTODILUTOR

Software controlled in-line dilution station

BD-40 TKN BLOCK DIGESTER

40-well block digester for total kjedahl nitrogen digestion (TKN)

CONTACT

sales@flowinjection.com
+1(206)258-2290
+1(800)963-1101